

HOUSING AND COMMUNITY SAFETY ADVISORY COMMITTEE
10 February 2015 at 7.00 pm

At the above stated meeting the attached presentation was shown:

6. **Strategic Assessment for Community Safety and Action Plan**

(Pages 1 - 28)

Kelly Webb

Presentation by the District Area Commander and the Community Safety Manager regarding crime trends of the past year and highlights the Sevenoaks Districts Community Safety Partnerships priorities for 2015-16

This page is intentionally left blank

Community Safety Strategic Assessment

Kelly Webb, Community Safety Manager
Chief Inspector Tim Cook, Kent Police

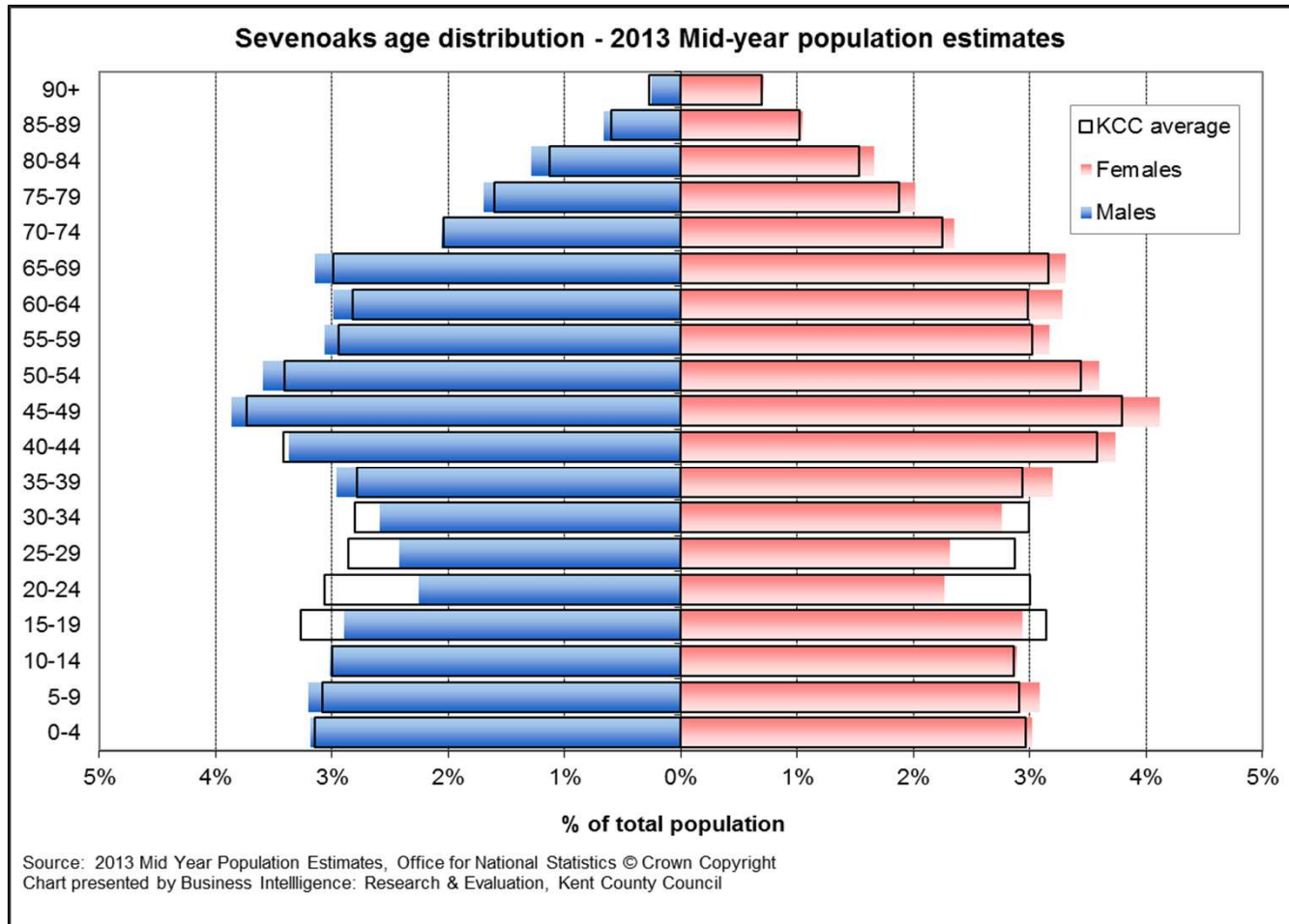


Overview of Strategic Assessment

- This strategic assessment is produced using data for the period December 2013 – November 2014 unless otherwise stated (for example crimes and ASB are April-November 2014).
- Data is collated from partner agencies of the CSP, resident surveys/panels and PACT meetings
- It identifies the priorities for the 2015-16 Sevenoaks District Community Safety Strategy & Action Plan.(running April – March)



Sevenoaks District Population Profile



Deprivation County rank of Kent Districts

LA CODE	District	2007 Index		2010 Index		Change in rank*	
		National rank (out of 326)	KCC rank (out of 12)	National rank (out of 326)	KCC rank (out of 12)	National position	KCC position
29UN	Thanet	60	1	49	1	11	0
29UL	Shepway	114	3	97	2	17	1
29UM	Swale	108	2	99	3	9	-1
29UE	Dover	142	5	127	4	15	1
29UG	Gravesham	132	4	142	5	-10	-1
29UC	Canterbury	180	7	166	6	14	1
29UD	Dartford	170	6	175	7	-5	-1
29UB	Ashford	206	8	198	8	8	0
29UH	Maidstone	225	9	217	9	8	0
29UQ	Tunbridge Wells	250	10	249	10	1	0
29UP	Tonbridge & Malling	256	11	268	11	-12	0
29UK	Sevenoaks	270	12	276	12	-6	0

* A minus change in rank illustrates that a district has moved down the rankings and is therefore now less deprived relative to other LAs in England

Source: Indices of Deprivation, Communities and Local Government

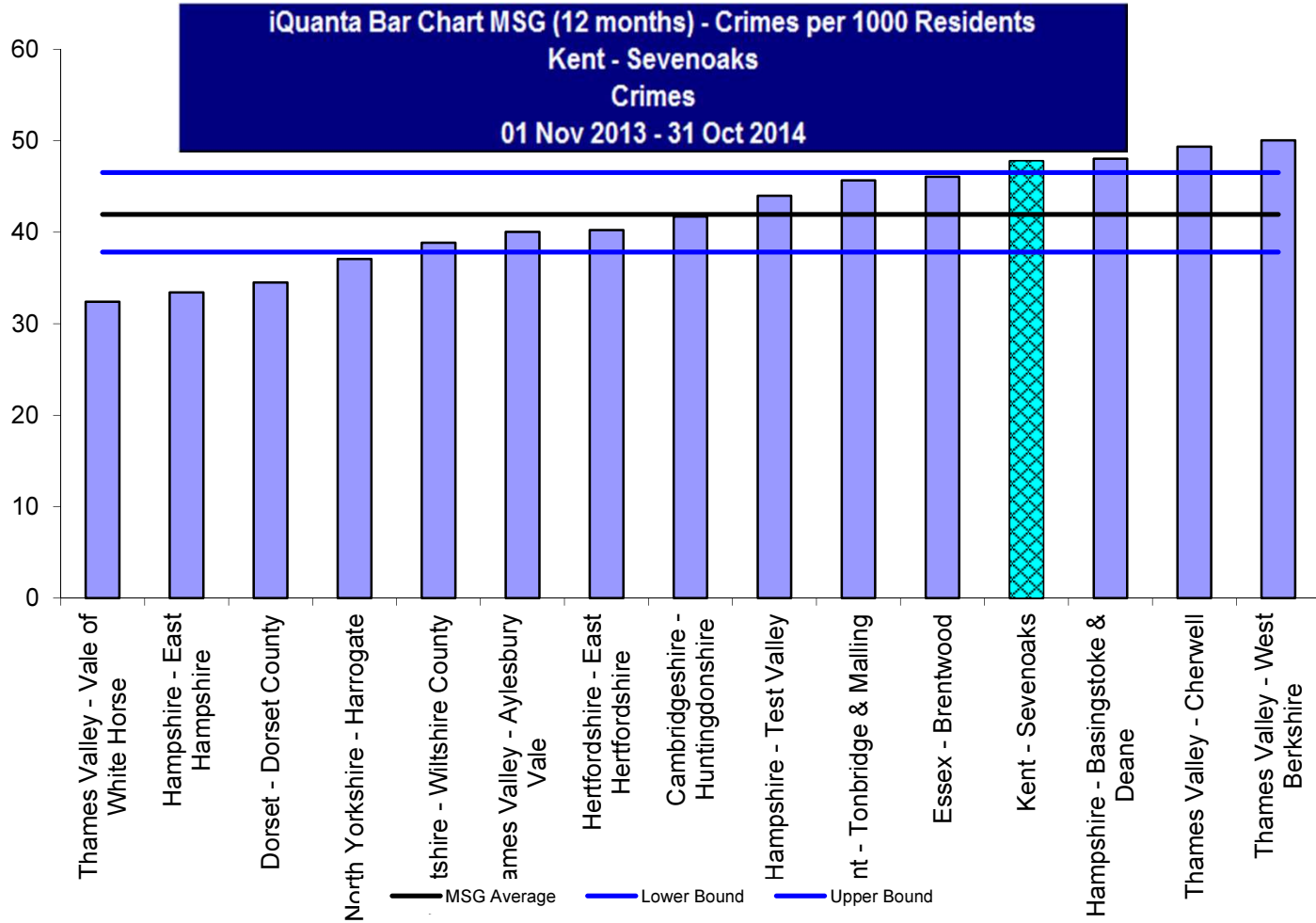


Unemployment within the District

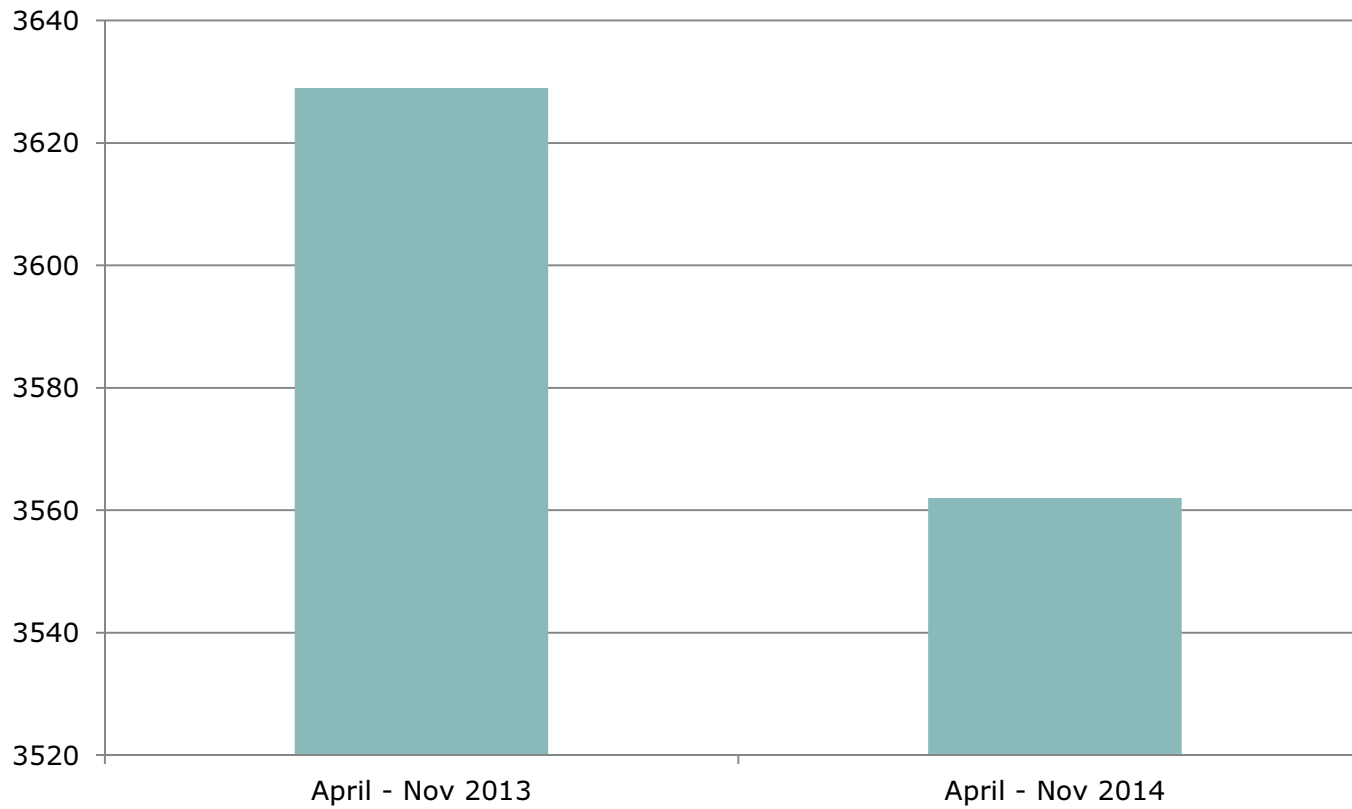
District	Total unemployed as at September 2014	Resident based rate %	Change since previous month		Change since last year	
			Number	%	Number	%
Sevenoaks	658	0.9%	-49	-6.9%	-254	-27.9%
Kent	16,162	1.8%	-622	-3.7%	-7,165	-30.7%
Great Britain	870,863	2.2%	-37,028	-4.1%	-391,876	-31.0%

Source: NOMIS - Claimant Count

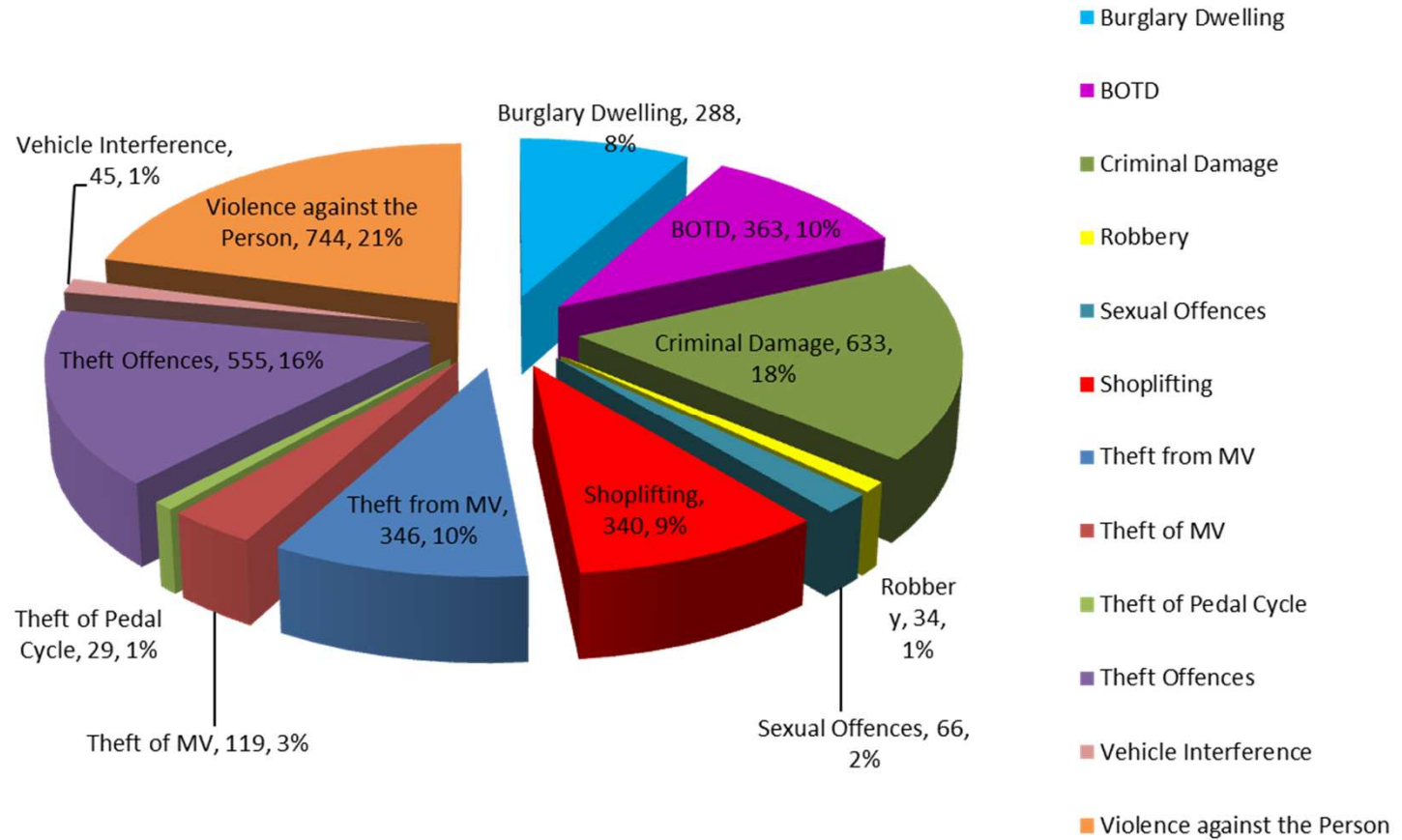
Most Similar Groupings



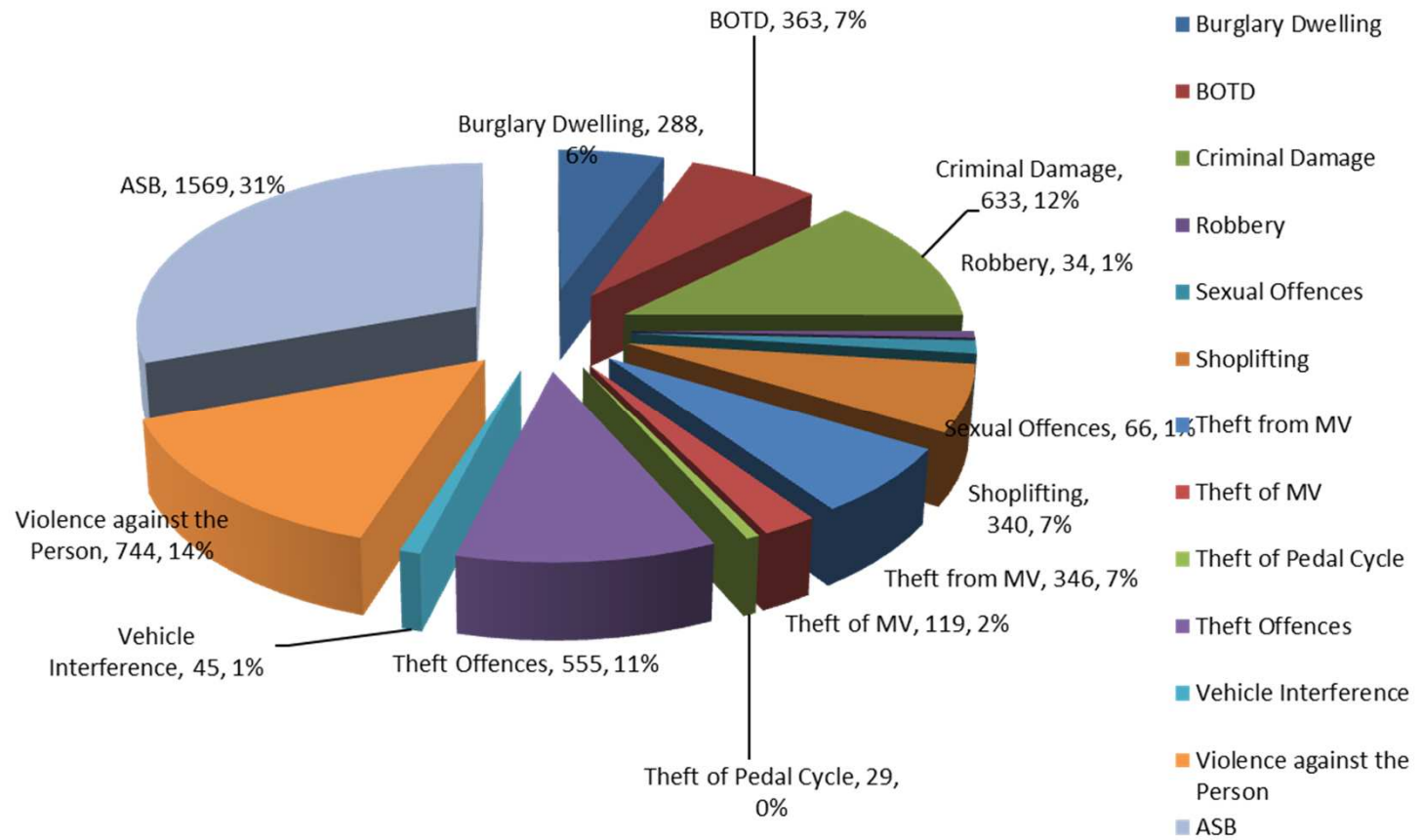
Victim Based Crime April – Nov 2014 v previous year



Crime Statistics April – Nov 2014



Crime & ASB Statistics April – Nov 2014



Sevenoaks District Crime Figures April – November 2014 (Kent Police)

Category	April 2013 –	April 2014 –	Difference	Percentage	Per 1K population	County Position	MSG Position
	Nov 2013	Nov 2014					
All Victim-Based Crime*	3629	3562	-67	-1.9%	30.6	3	12
Anti-Social Behaviour	1561	1569	8	0.5%	13.5	2	
Burglary Dwelling	291	288	-3	-1.0%	2.5	10	12
Burglary Other	473	363	-110	-23.3%	3.1	9	11
Criminal Damage	653	633	-20	-3.06%	5.4	2	14
Domestic Abuse - No. of incidents	651	771	120	18.4%	6.6	1	
Domestic Abuse - No. of repeat victims	165	186	21	12.7%	1.6	1	
Domestic Abuse - % of repeat victims	25.3%	24.1%	-1.2%	-4.74%		3	
Drug Offences – Police Data	136	15	-121	-88.9%	0.1	1	
Drug Offences – Iquanta Data	199	109	-90	-45.2%	0.9		1
Metal Theft	73	36	-37	-50.7%	0.3	5	
Robbery	16	34	18	112.5%	0.3	5	12
Sexual Offences	69	66	-3	-4.3%	0.6	1	5
Shoplifting	268	340	72	26.9%	2.9	2	
Theft and Handling Exc VI	911	924	13	1.42%	7.9	1	4
Theft From a Motor Vehicle	455	346	-109	-23.9%	3.0	9	13
Theft of a Motor Vehicle	126	119	-7	-5.5%	1.0	8	14
Theft of a Pedal Cycle	27	29	2	7.4%	0.2	1	1

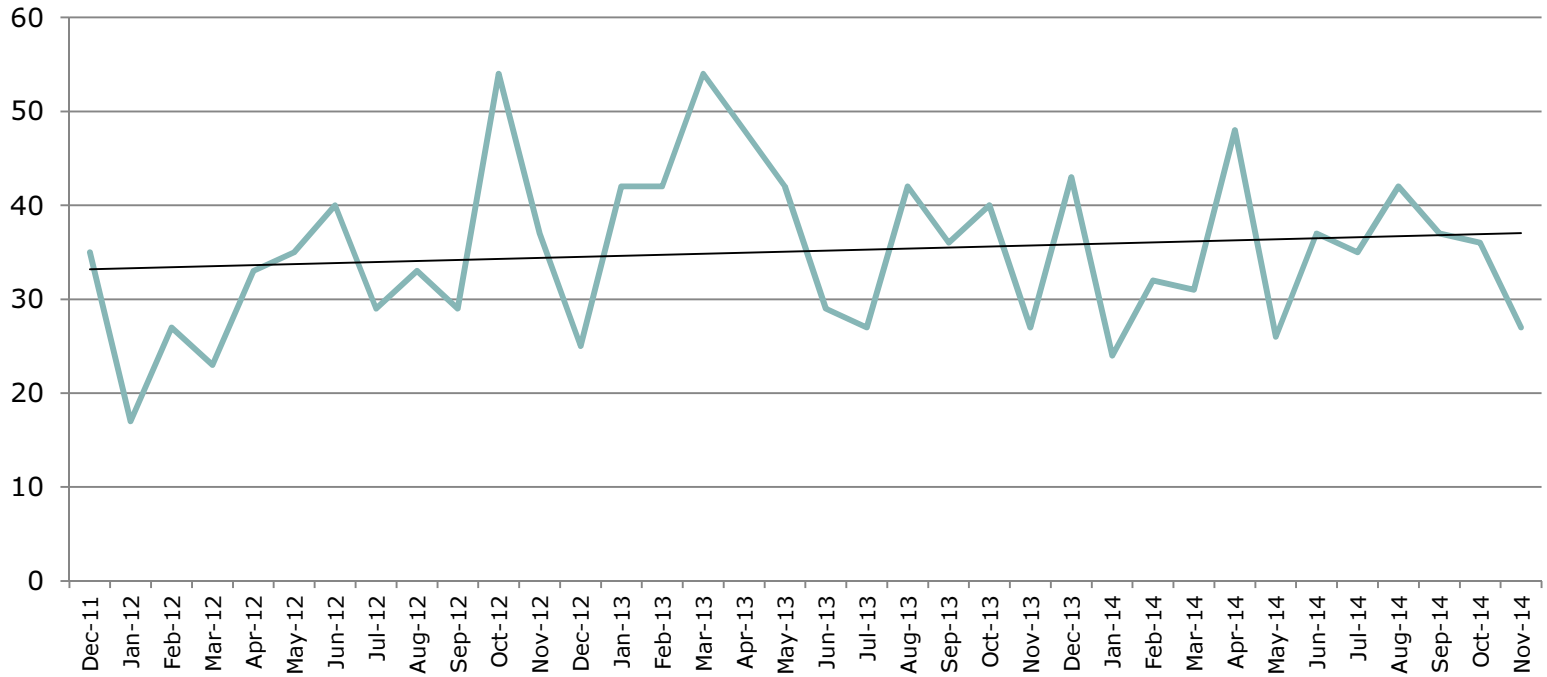
Sevenoaks District Community Partnership Ranking

Community Safety Issue	Community Concern	Trend Increase	Volume	Level of Harm	Poor Performance comparison	Partnership Contribution	Total
Domestic Abuse*	3	5	5	5	3	5	26
Burglary	5	3	3	5	5	3	24
Anti-Social Behaviour*	5	3	3	5	3	5	24
Substance Misuse	5	3	3	5	1	5	22
Vehicle Crime	3	3	3	5	5	3	22
Road Safety	5	3	1	3	5	5	22
Shoplifting	3	5	5	3	1	3	20
Youth Issues	5	1	1	5	0	5	17
Criminal Damage	5	1	3	1	3	3	16
Repeat Offenders	3	3	3	3	0	3	15
Vulnerable Adults	3	1	1	3	1	5	14
Fires	1	1	3	3	-	3	11

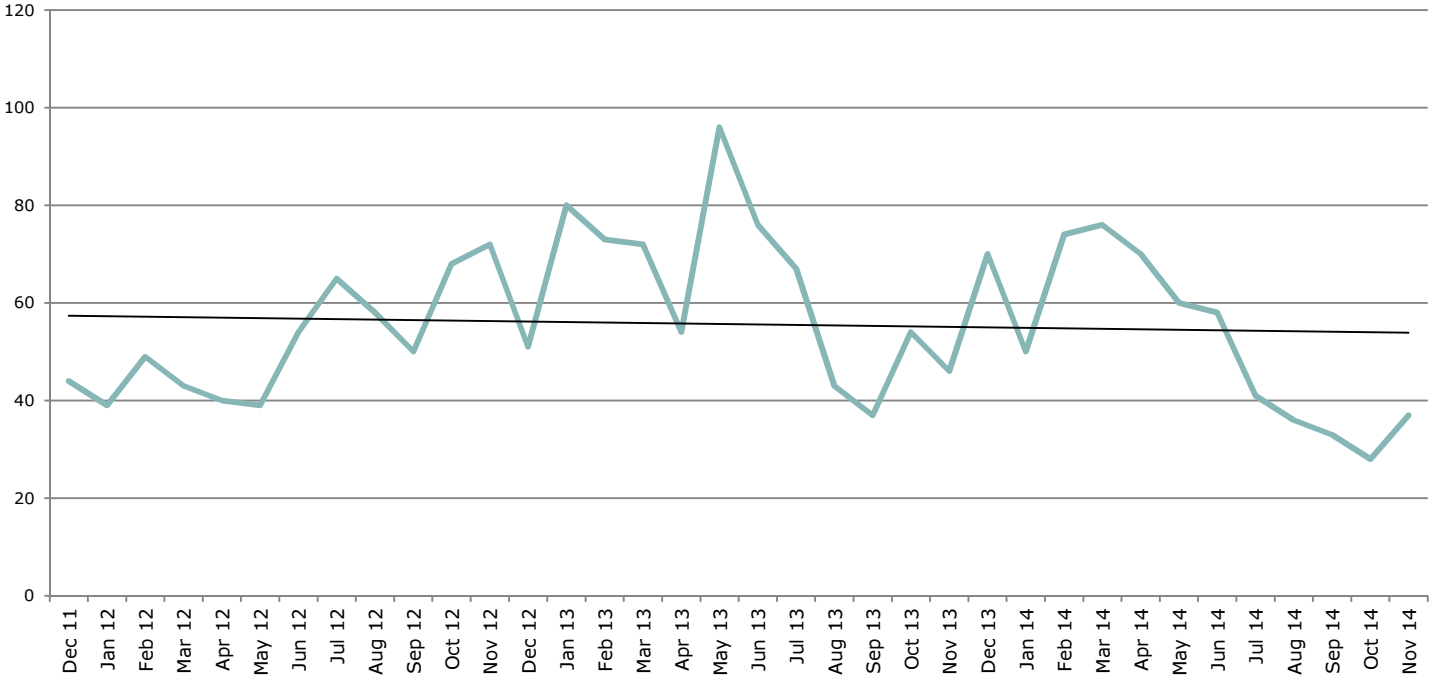
Burglary

- Kent Police data shows that burglary offences in the Sevenoaks District have decreased by 17% (133 offences)
- The District ranks the 3rd highest for Burglary Dwelling offences and 4th highest for Burglary other than Dwelling in the County.
- The District has the highest rate of burglary offences in its MSG.

Burglary Dwelling over 3 years



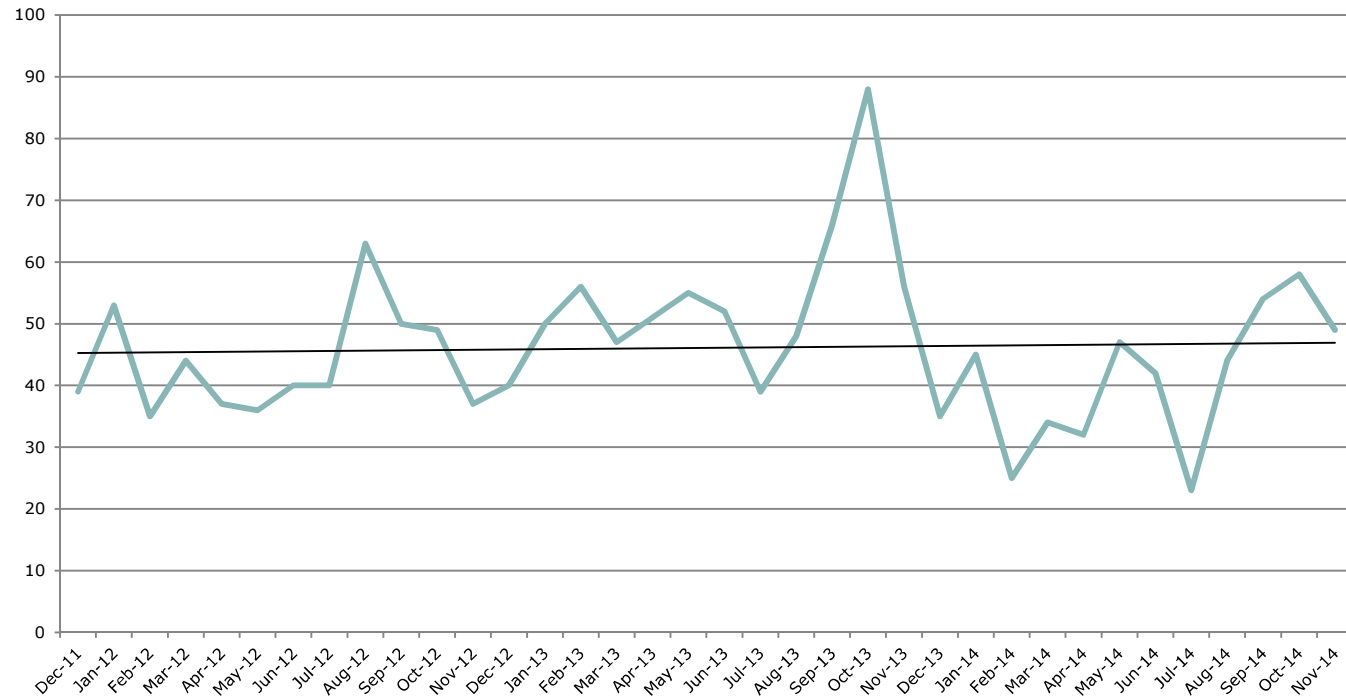
Burglary other than Dwelling over 3 years



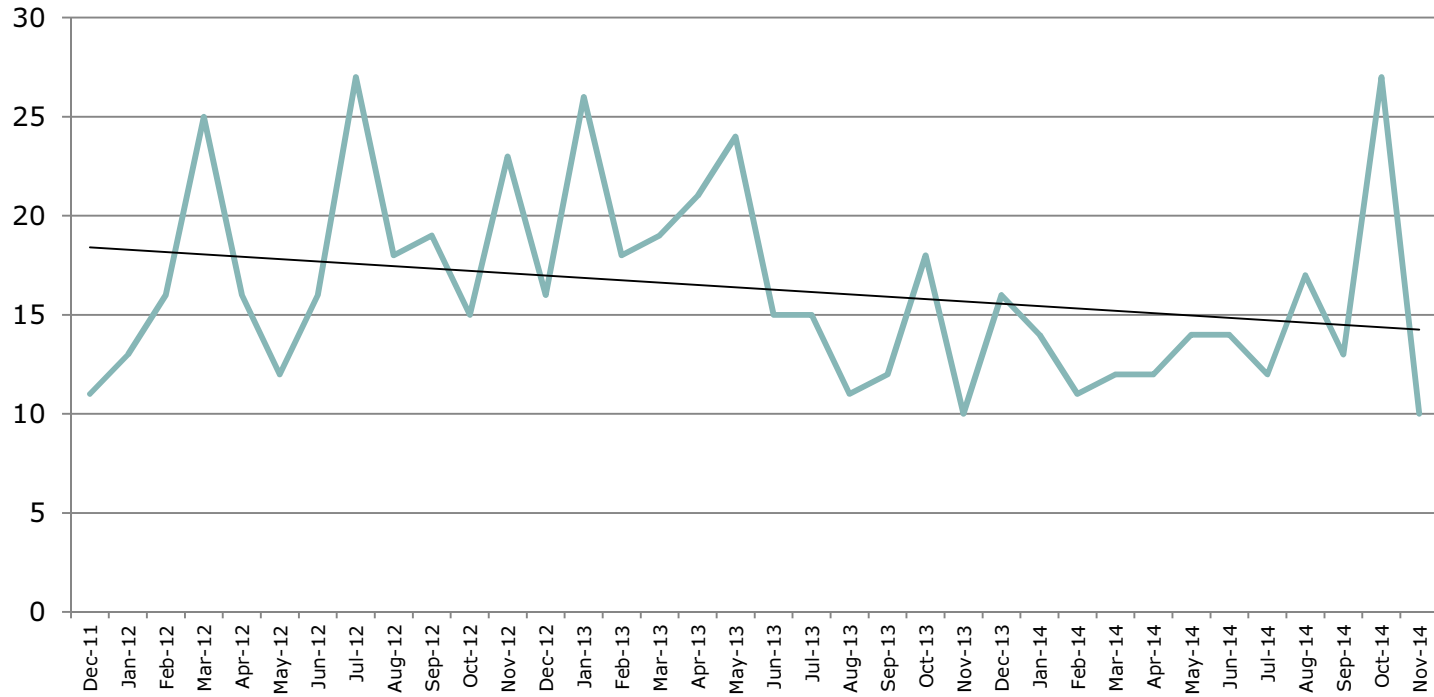
Vehicle Crime

- Kent Police data shows Vehicle crime (which includes Theft From Motor Vehicle and Theft Of Motor Vehicle) is down 19.9%
- The District ranks 2nd highest for TOMV and 4th highest for TFMV in the County.
- The District has the 2nd highest rate of vehicle crime in its MSG.

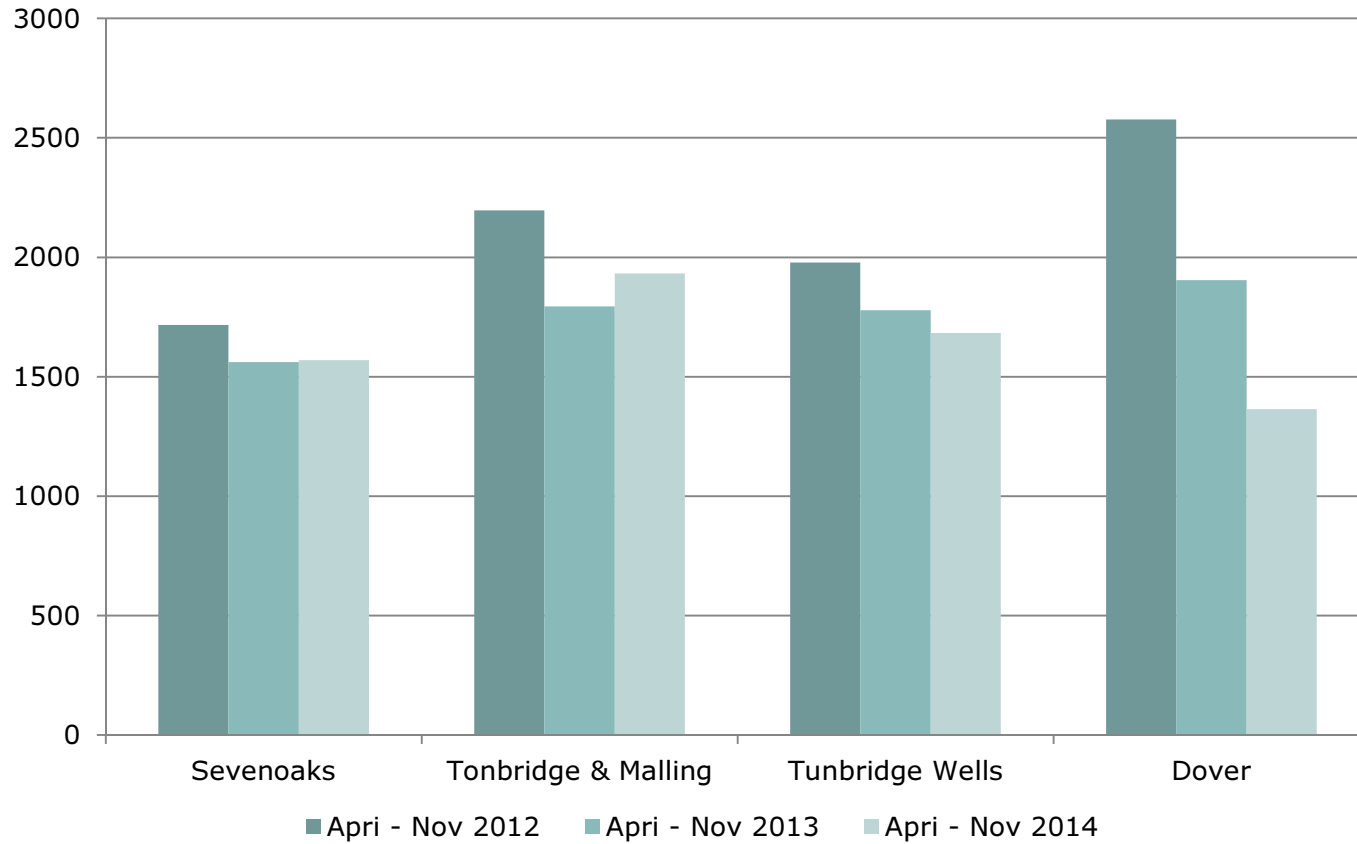
Theft from Motor Vehicle over a 3 year period



Theft of Motor Vehicle over a 3 year period



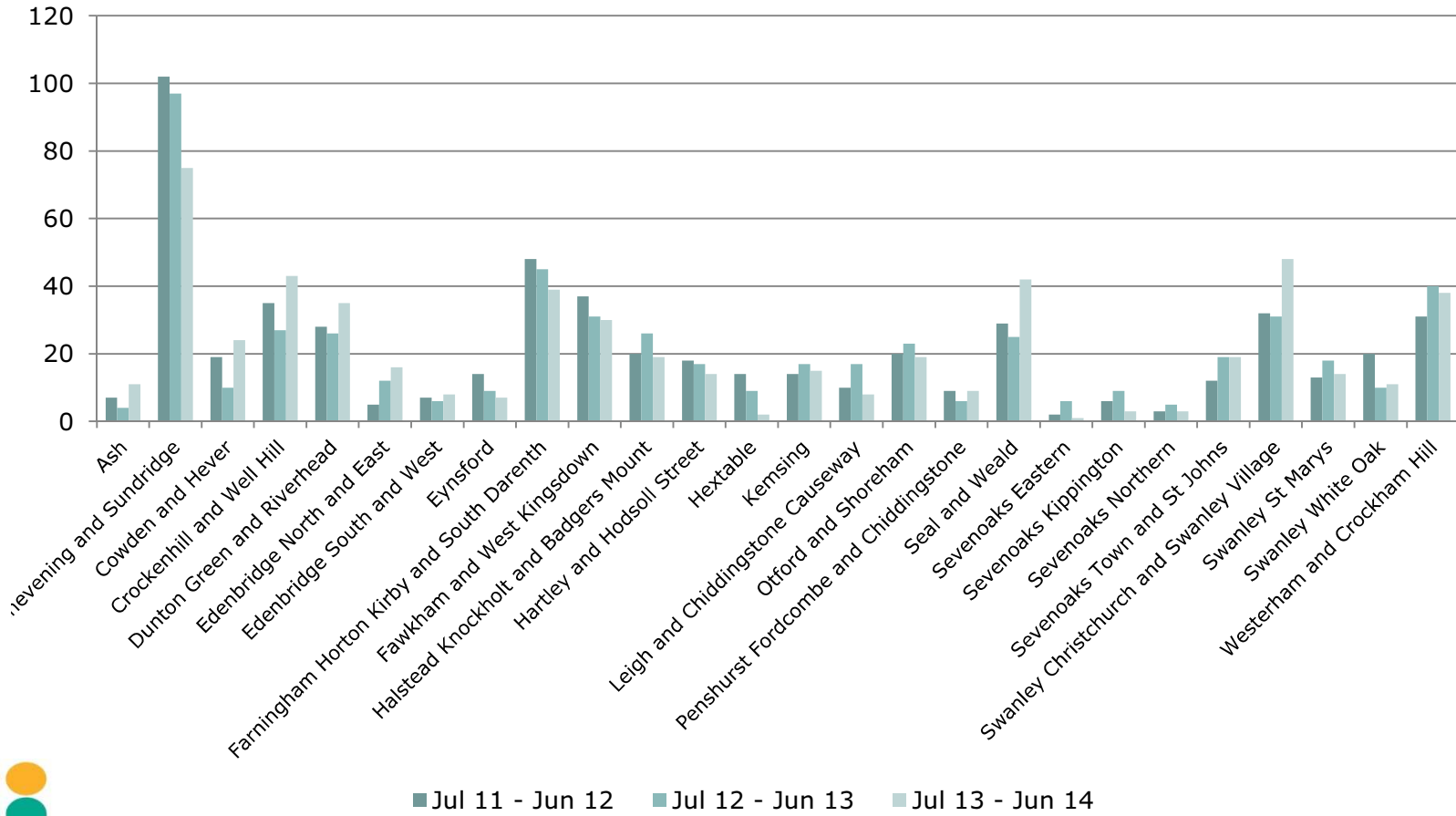
Anti-Social Behaviour incl Environmental Crime



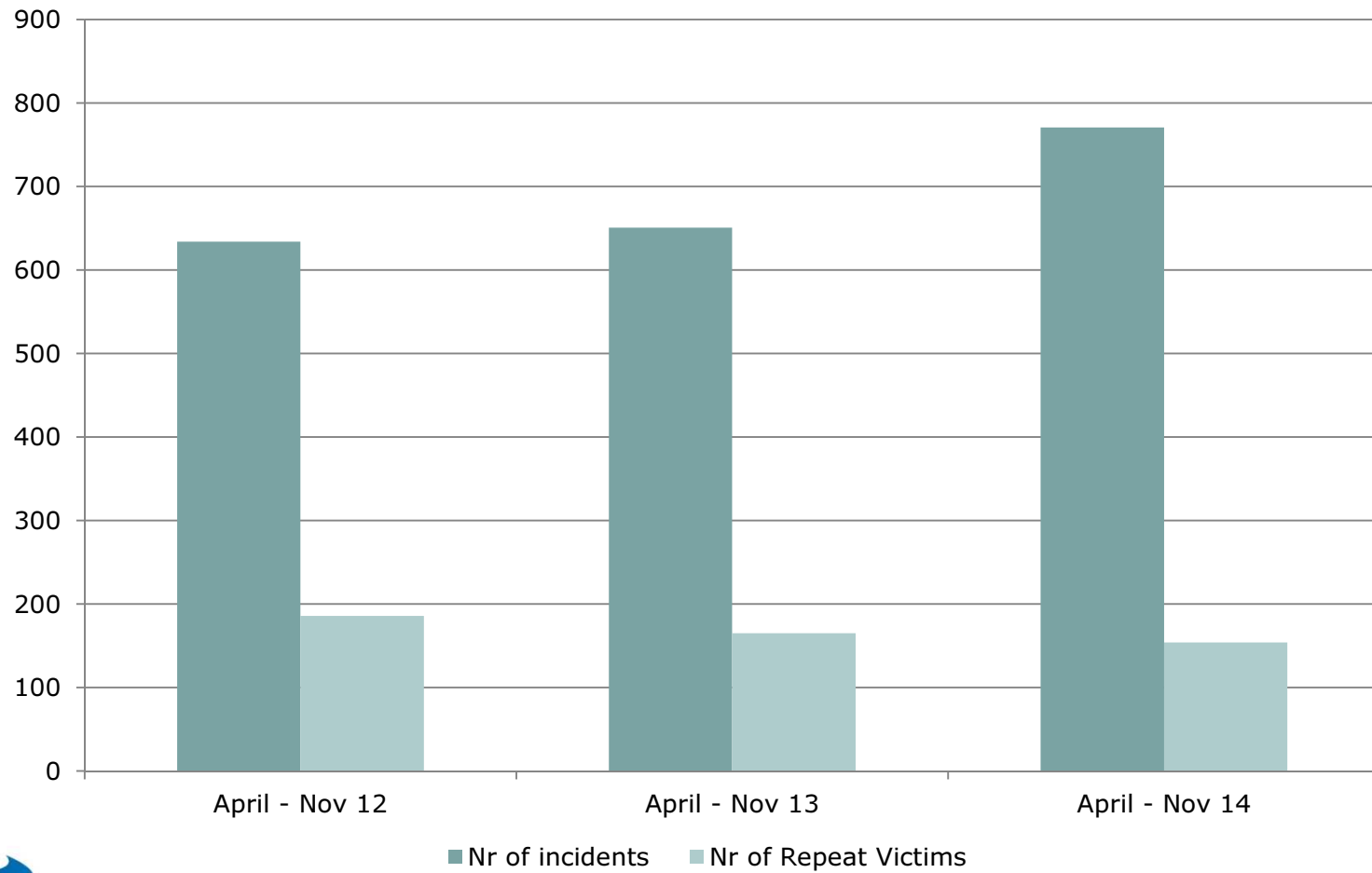
Anti-Social Behaviour incl Environmental Crime cont

	2008/09	2009/10	2010/11	2011/12	2012/13
Ashford	1123	1,049	876	874	946
Canterbury	1658	1,373	1685	1883	1,664
Dartford	1722	1,635	1637	1328	1,304
Dover	619	438	512	695	969
Gravesham	896	882	801	1153	1,438
Maidstone	1138	1,280	931	1035	931
Sevenoaks	658	529	455	309	355
Shepway	894	857	658	664	1,004
Swale	2629	2,267	1952	1758	1,925
Thanet	376	484	835	1057	904
Tonbridge & Malling	719	609	434	463	416
Tunbridge Wells	531	567	432	392	279
Kent Total	12963	11,970	11208	11611	12,135

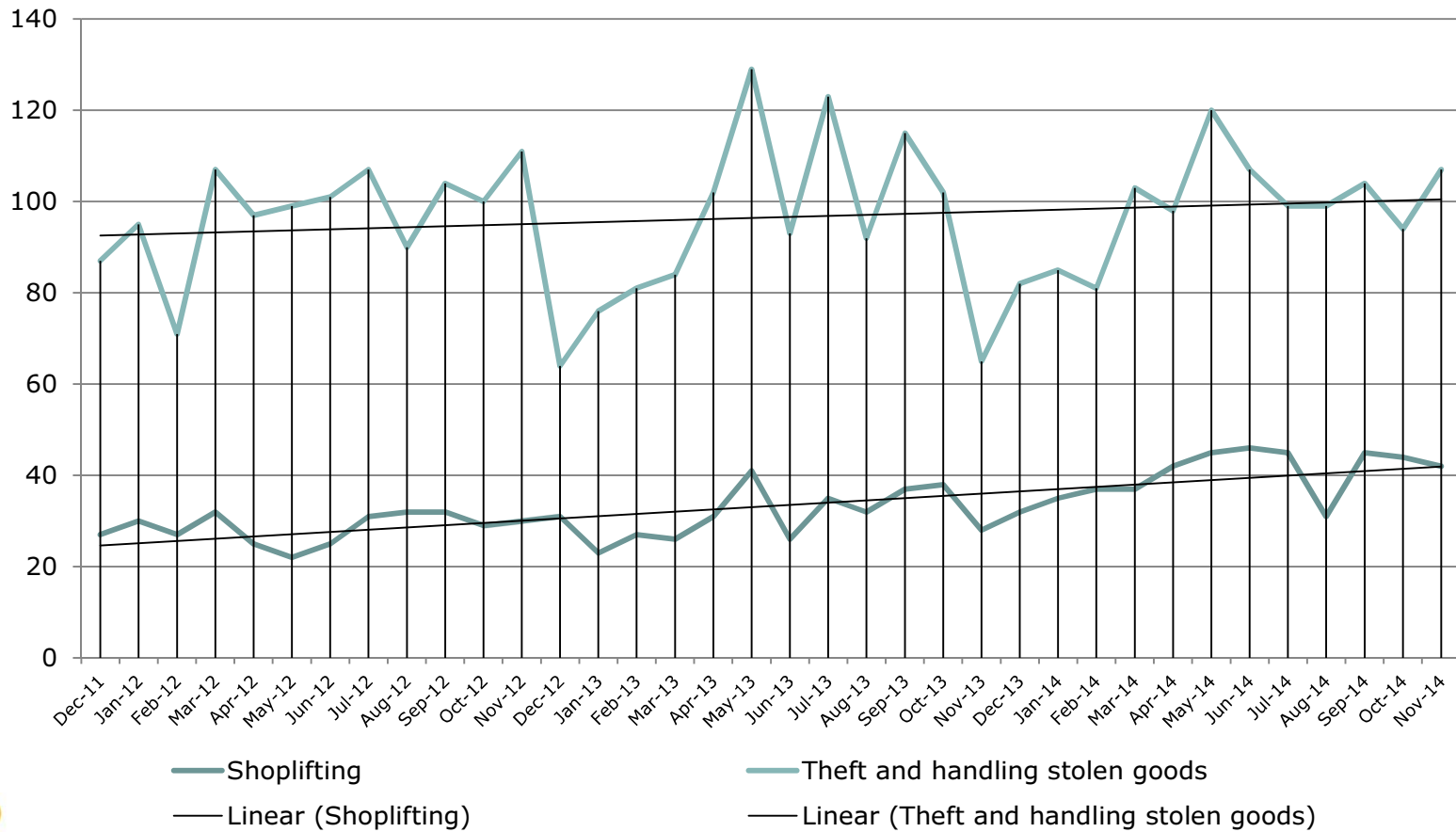
Road Safety



Domestic Abuse



Theft & Handling of Stolen Goods focussing on Shoplifting



Substance Misuse

- Since April 2013, drug offences are no longer recorded in the Victim Based Crime figures released by Kent Police. However, figures collated in iQuanta show total drug offences are down 25.7% (48 offences) with 142 recorded this year (April – November 2014).
- Sevenoaks has the lowest rate in the County and ranks 1st in Kent.
- Kent Police have provided rolling data on Drug Offences and this has also seen a decrease of 2.6% (4 offences from 158 to 154).

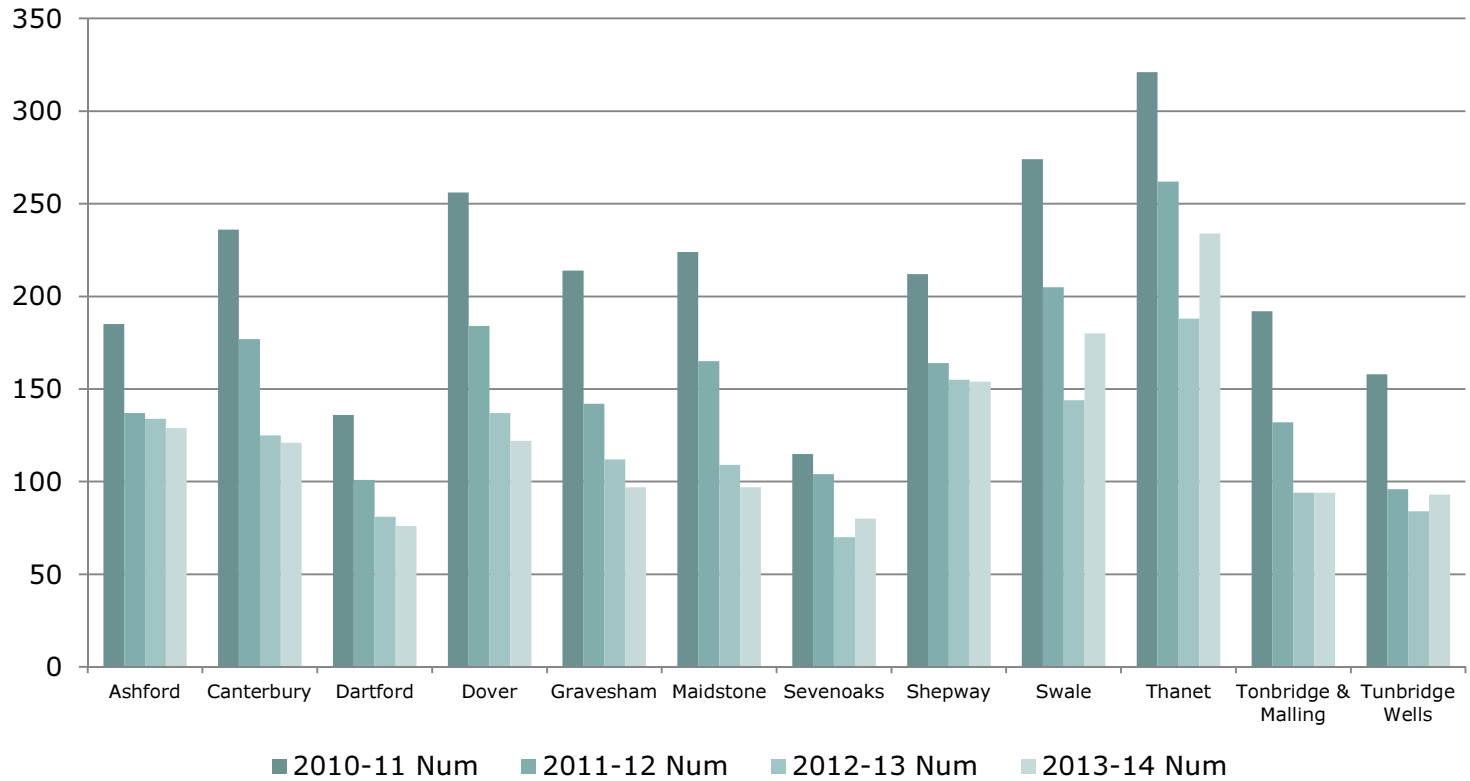


Substance Misuse cont

		2012/13 YTD	Q1	Q2	Q3	Q4	2013/14 YTD	
All	Number of new clients accessing structured treatment per quarter	69	20	16	27	31	94	
	Total number of clients in effective treatment	219					241	
	Treatment exits	Planned	70%					62%
		Unplanned	30%					38%
Drugs	Total number of clients in effective treatment		37	40	48	47	172	
	Treatment exits	Planned					69%	
		Unplanned					31%	
	Alcohol	Total number of clients in effective treatment		8	15	20	26	69
Treatment exits		Planned					55%	
		Unplanned					45%	

		2011/12 YTD	2012/13 YTD	Q1	Q2	Q3	Q4	2013/14 YTD
Number of young people starting a new treatment journey		6	7	0	7	7	0	14
Total number of young people engaged with structured substance misuse services		11	10					28
Treatment exits	Planned	67%	100%					80%
	Unplanned	33%	0%					20%

Young People's Issues



Priorities for the CSP

- The priorities for the CSP were highlighted from the statistics and contextual data provided by partners and the surveys
- Partner agencies met in January to agree actions to address the priorities

Priorities for the CSP

- **Our 8 priorities are:-**
- Domestic Abuse
- Burglary
- ASB incl Environmental
- Substance Misuse
- Vehicle Crime
- Road Safety
- Shoplifting
- Youth Issues

Thank you

